

EXECUTIVE SUMMARY REPORT

GRANT REGIONAL HEALTH CENTER – EXPANSION & RENOVATION

March 26th, 2018

What's New?

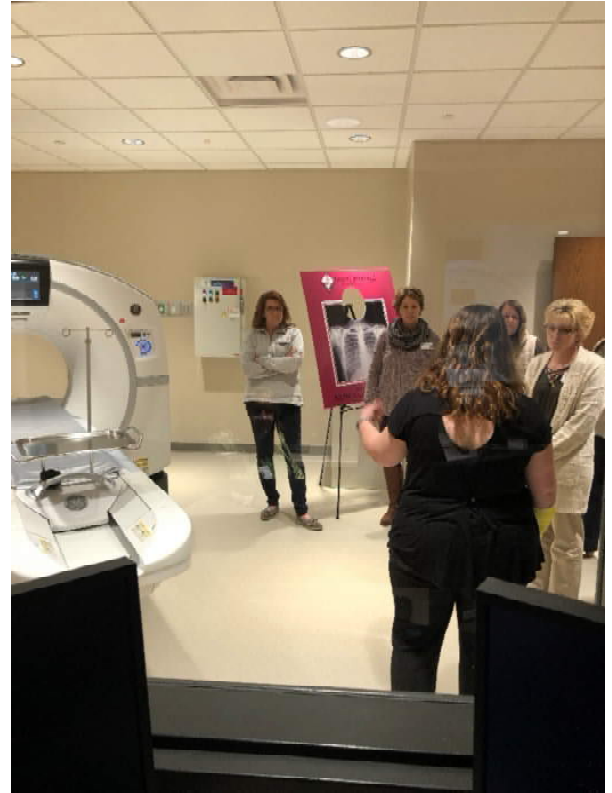
The Imaging Suite is turned over and open for business! Staff training is underway and the space is getting ready for patient use. Stud walls went up in the CS space with MEP rough ins underway. The drywall installation will follow next week. The lower level of the new Clinic / Med Surge addition had the drywall installation completed and is almost completely painted out. Finishes will follow within the next few weeks. The upper level of the new Clinic / Med Surge addition has MEP roughs in being installed as well as blocking. Drywall topping out is being installed and complete drywall installation will follow in the week to come as well as the above ceiling MEP rough ins. The exterior canopy masonry piers were completed and sitework is being scheduled.

The Past Weeks

- Grand opening of the Imaging Suite
- Wall framing in the CS department
- Drywall installation & painting in the lower level Clinic / Med Surge addition
- Wall framing & drywall topping out in the upper level Clinic / Med Surge addition
- Completed spray foam insulation in the canopy

Coming Up in the Weeks Ahead

- Drywall installation in the CS department
- Begin construction in the old Imaging Suite
- Complete the elevator installation
- Begin finish installation in the lower level Clinic / Med Surge addition
- Drywall installation in the upper level Clinic / Med Surge addition



A staff lead tour of the new Imaging Suite, this photo is taken from the control room for the new CT machine.



The Imaging Suite had a ribbon cutting ceremony which involved an open house for hospital staff to tour the new space, have light refreshments, and enjoy a photo booth opportunity! The construction staff participated in the fun as well.



Did you know? The first day of spring is always in March on either March 20 or March 21; this year it fell on Tuesday, March 20. The first day of spring is also called vernal equinox which is when the sun crosses over plane of the earth's equator, making night and day approximately equal lengths all over the world. It is the only time of year when the sun rises in the east and sets in the west for everyone across the world and when Earth's tilt is zero in relation to the sun.

EXECUTIVE SUMMARY REPORT

GRANT REGIONAL HEALTH CENTER – EXPANSION & RENOVATION

March 26th, 2018



The Findorff team gave a career presentation followed by a construction site tour to the Club Scrub kids within the past weeks.



The Findorff field team collaborates on the roof (this is the elevator shaft pictured) for the insulation installation.



The next step is measuring out and installing the waterproof membrane (the green adhesive paper pictured above) and apply a sealant to the densglass.



Step by step process of how the masonry piers are put together, first densglass (yellow board) is installed on the concrete piers.



The last step is the actual installation of the masonry bricks piece by piece, then a thin metal flashing, and it is topped off with the large coping stones.

EXECUTIVE SUMMARY REPORT

GRANT REGIONAL HEALTH CENTER – EXPANSION & RENOVATION

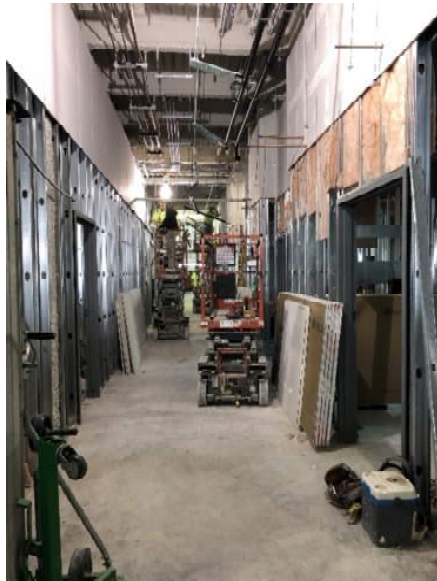
March 26th, 2018



A room in the lower level Clinic / Med Surge addition ready for paint and a freshly painted corridor. The next steps for this space will be to start the finishes.



A view of a nurse station in the lower level Clinic / Med Surge addition. The drywall taping followed by painting will move into the north and south end of this area next which includes this station.



Looking down the long corridors of the upper level Clinic / Med Surge addition. Many lifts are being utilized to installing the drywall topping out in these corridors. In the next weeks the full drywall installation will begin and MEP above ceiling rough ins.



A peek into the CS department, which has stud walls installed and MEP rough ins underway.